



中国电建  
POWERCHINA

# ESG

# 2023

## 环境、社会及治理 (ESG) 报告

中国电建集团国际工程有限公司  
POWERCHINA INTERNATIONAL GROUP LIMITED

# 目录

报告说明	01
董事长致辞	03
我们的全球承诺	05
关于我们	
公司介绍	07
我们的战略	08
2024年目标	09
我们的业务	10
关键绩效	14
奖项与荣誉	17
利益相关方管理	19
实质性议题分析	19

## 01 | 治理

组织机构	23
可持续治理	26
风险管理与内部控制	31
商业道德与诚信	33

## 03 | 社会

社会责任方针与目标	51
员工	52
社区关系	55
质量与职业健康安全	62
负责任采购	75

## 02 | 环境

环境合规	37
应对气候变化	39
废弃物管理	45
水资源循环利用	46
生物多样性保护	47

## 附录

区域总部国别市场划分	79
利益相关方关注议题	81

## 数据表

85

## 指标索引

83

## 审验报告

95

10

58

15

2023	1	1	2023	12	31
2023	1				

ESG@powerchina-intl.com

Standards 2021)

(GRI)

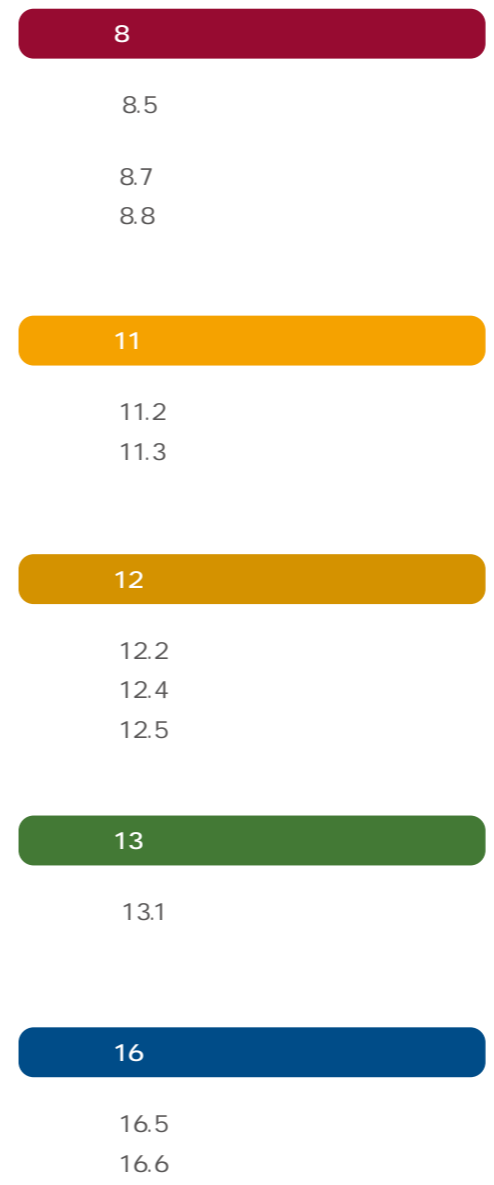
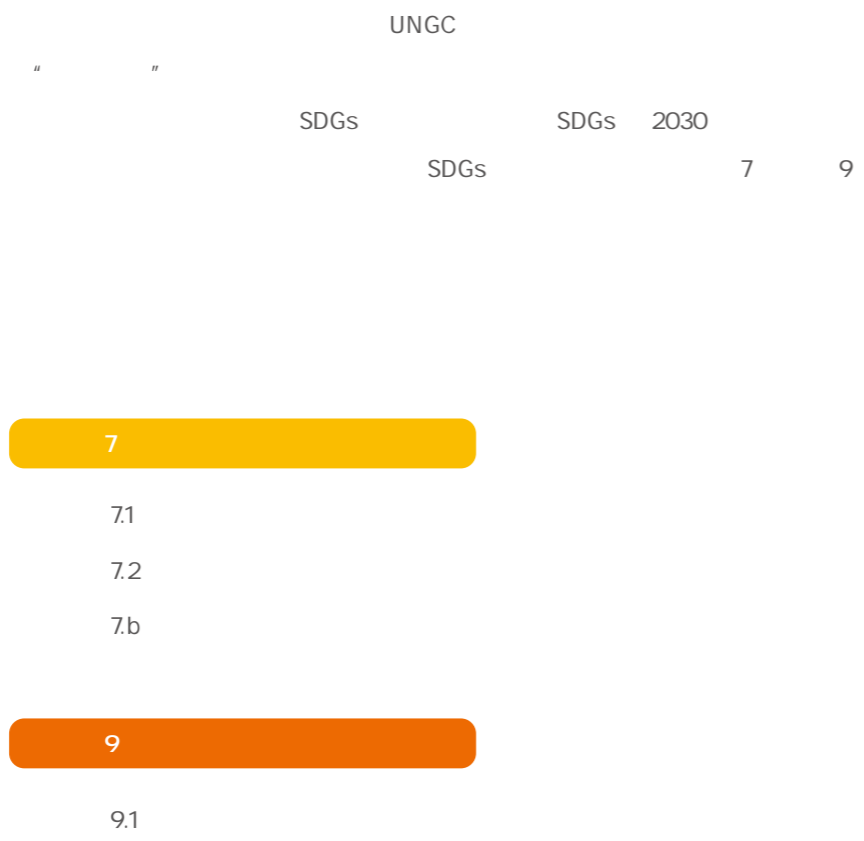
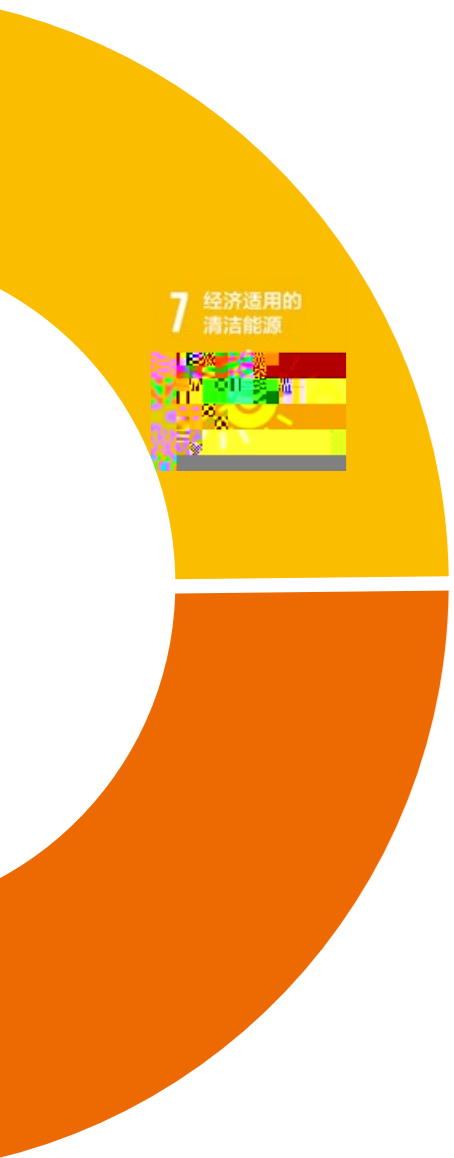
UNSDGs

(GRI

ESG

Adama







# 2024

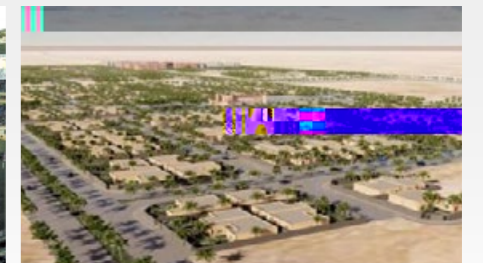
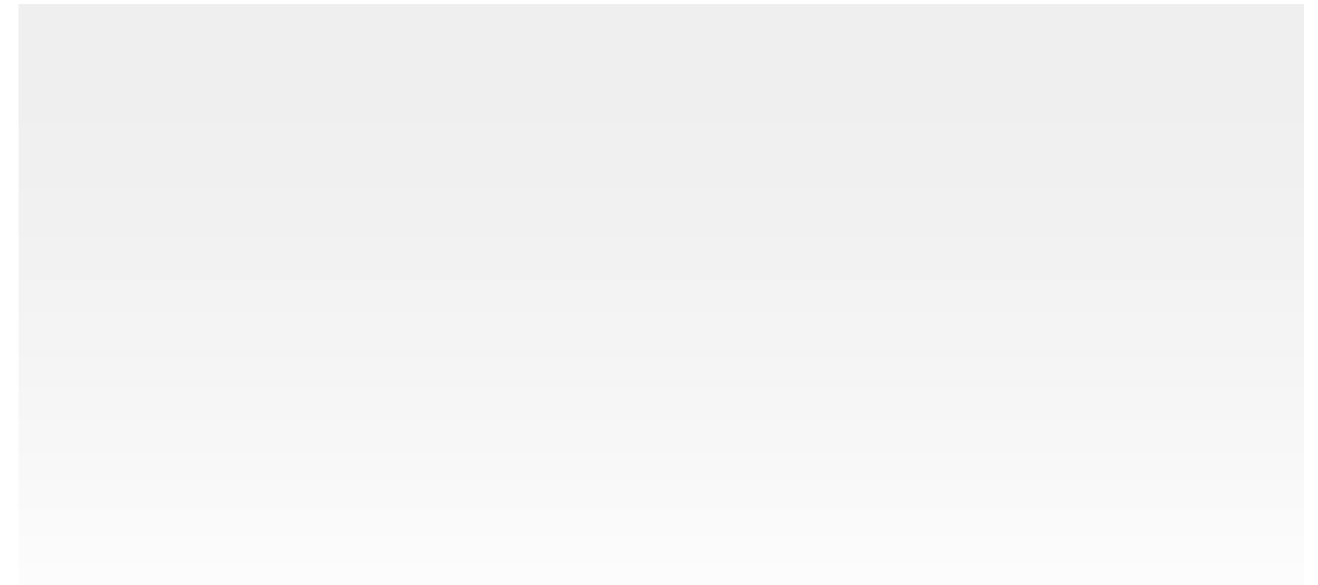
2024

ESG

ESG

ESG

ESG



43

2023

10.90%



1

2023

3.69%



DCCP

28

2023

9.70%



233



145WAc

8

2023

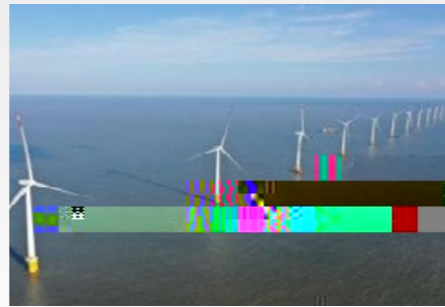
3.20%



14

2023

5.24%

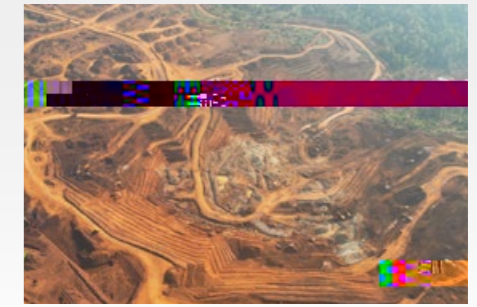


V1-2

10

2023

3.19%



KKU

42

2023

4.28%

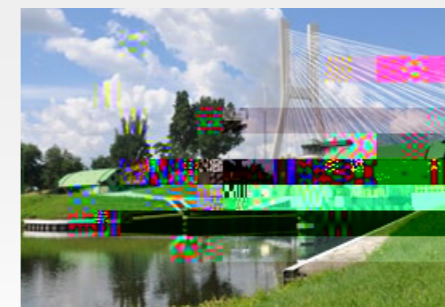


330kV

9

2023

3.36%



2023 4  
3 2 1

2023 4



154.30



6.10

6.93



EPC

38.10

1:6.1

8 4 2 2  
1

BOO Build-Own-Operate

EPC

Build-Operate-Transfer

BOT



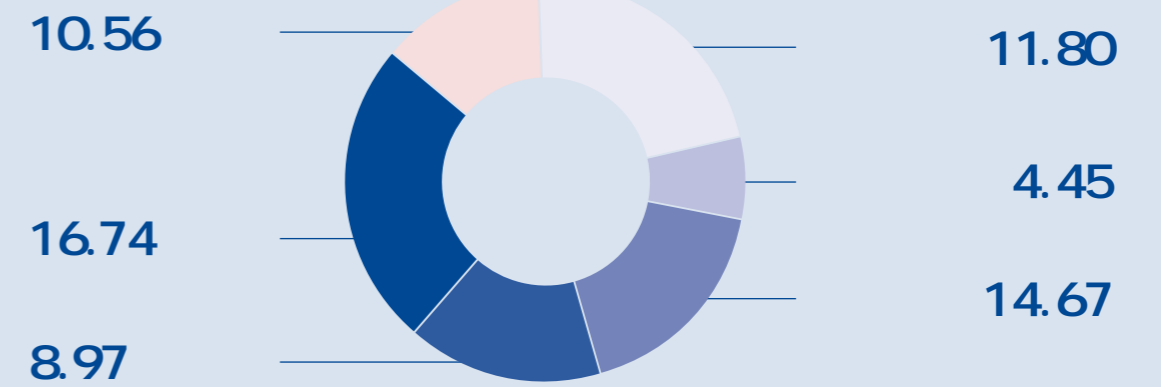
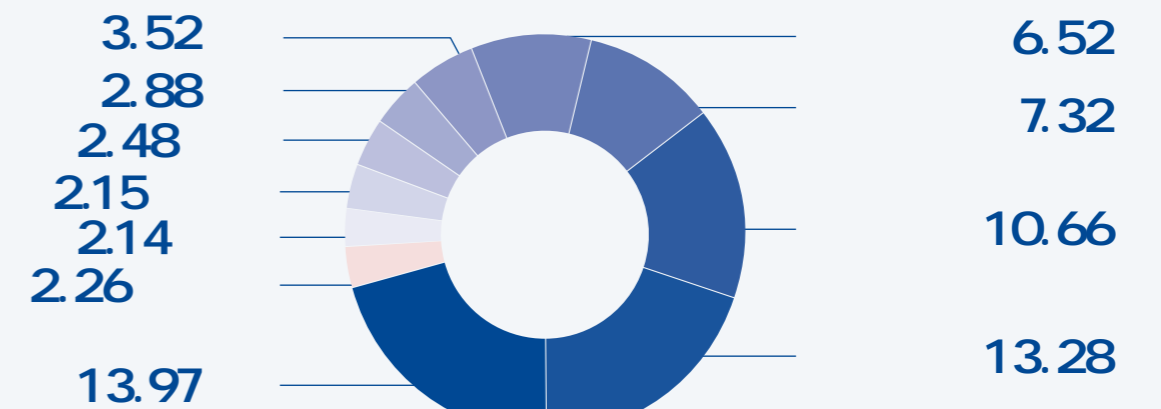
BOT

DOBT Develop-Own-Build-Transfer



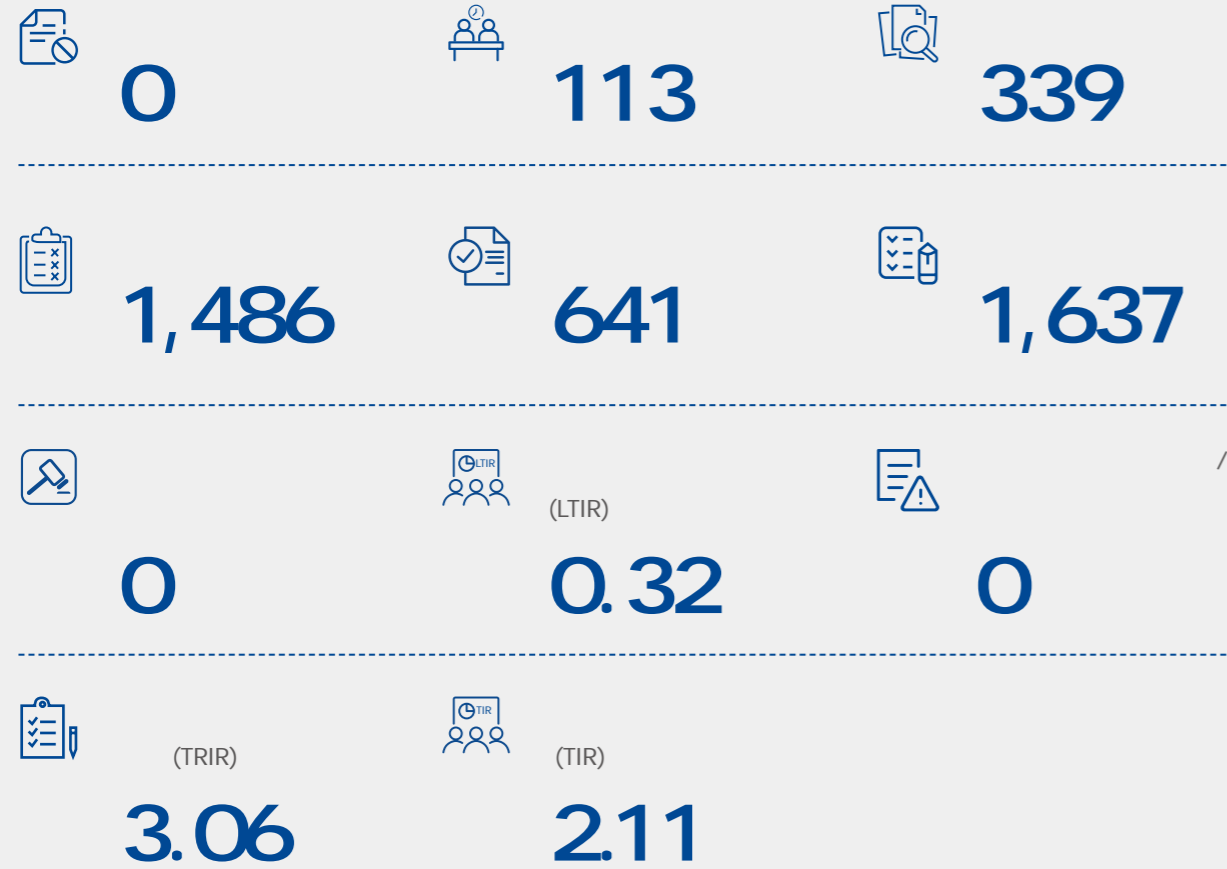
DOBT

2023							25711	6719	1
=7.0524		2022							
2023									13.97
20.8%	13.28		19.77%	10.66		15.87%			
	16.74		24.91%						
	14.67		21.84%	11.80		17.56%	10.56		15.71%



2023 LTIR 0.32 TIR 2.11 TRIR 3.06

2023



2023 12 333 318 95.4%  
94.99% 2022

	2023	2022
	95.55%	94.42%
	94.29%	93.46%
EPC	94.49%	93.40%
EPC	95.37%	93.93%
	95.24%	94.02%
	95.22%	94.40%
HSE	95.37%	93.46%
	94.41%	93.46%
	94.99%	93.82%

2023

WWF

RMI

(SEE )

(C Team)

" 2023

"

" " ESG TOP10

2023

ESG

14

2

6

6



2023

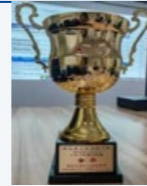


2023



ADAMA

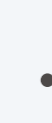
2023



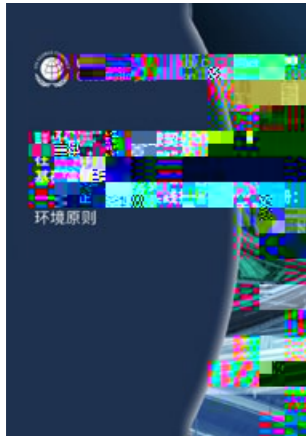
2023



2023



29



2023



ISA Distinction



2023



2023



2022-2023



2022-2023



2023



330Mwp

2023



2023



2023



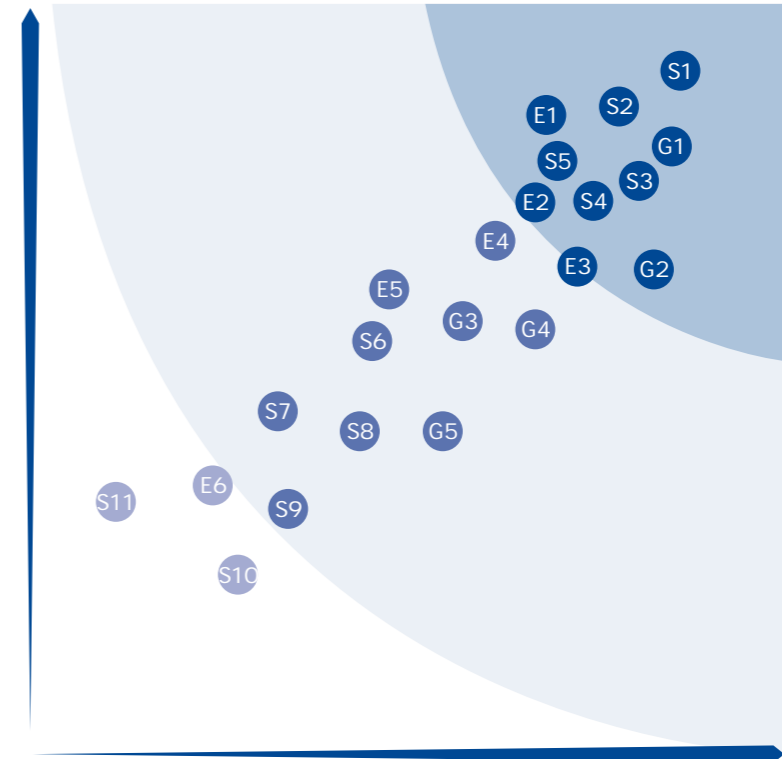
P81

11

5

22

6



- S1
- S2
- G1
- S3
- E1
- G2
- S4
- S5
- E2
- E3

E

- E4
- G3 ESG
- G4
- G5
- E5
- S6
- S7
- S8
- S9

S

- S10
- E6
- S11

G

P83



# 01

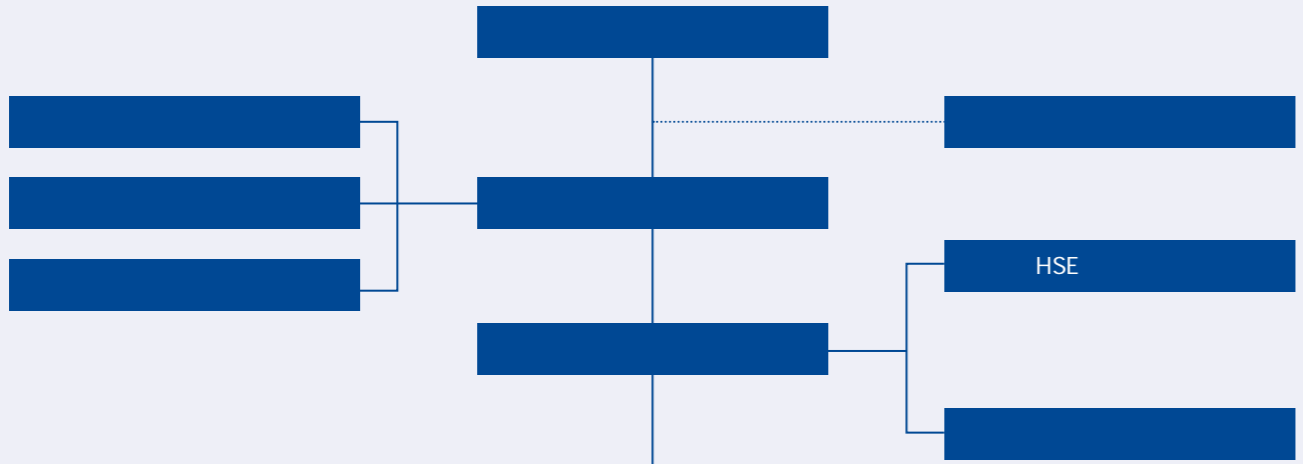
## 治理

- 组织机构
- 可持续治理
- 风险管理与内部控制
- 商业道德与诚信

---" "

ESG

1 1 1 1  
4 1 10 1  
1



	1. 14
	2. 6
	3. 6

	1. 211
	2. 333

1974 2023 11

1972 2023 11

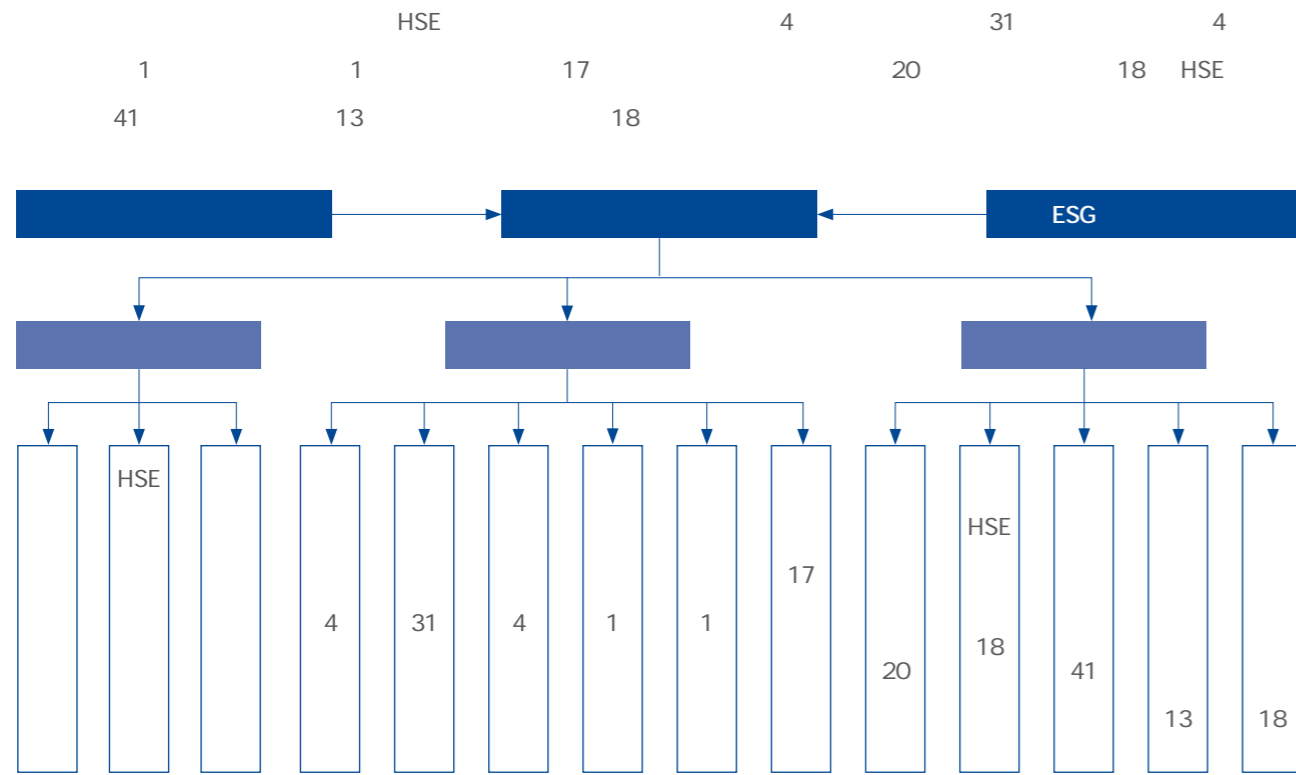
1965 2018 8

1963 2021 12

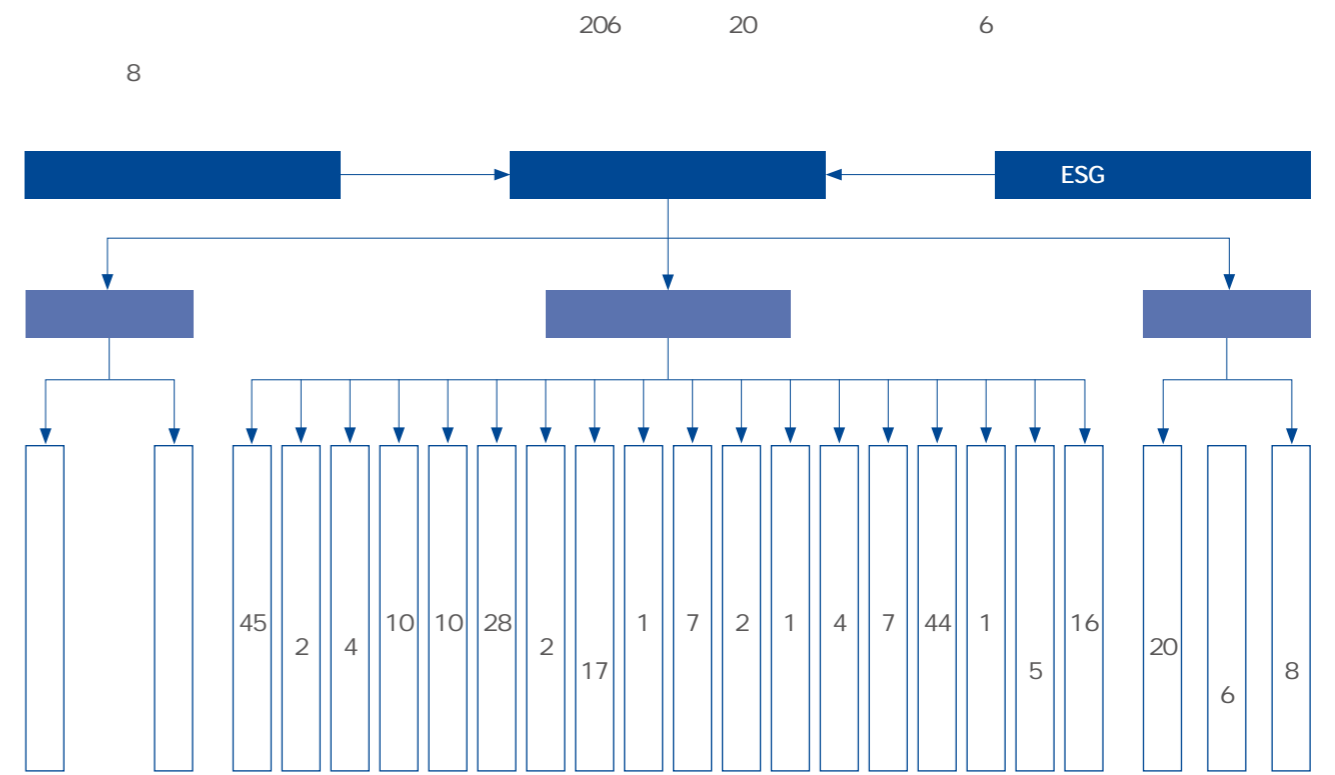
1962 2021 12



S



G



2023

ISO 9001

ISO 45001

ISO 14001

ISO 50001

ISO 37301



ISO 9001 2015



ISO 14001 2015



ISO 45001 2018



ISO 50001 2018



ISO 37301 2021

# ESG

ESG

Enablon ESG

ESG

GRI



<https://www.powerchina-intl.com>

2023 12 19

HSE



19

2023



ESG



•  
•  
• " + "

•  
• ESG  
•

•  
•

•  
•  
•

ESG  
ESG

ESG

• ESG  
•  
•

• ESG  
• ESG

•  
•

•  
•

•  
•



2023

3

ISO37301 2021  
2 8

4 3

"  
"

2023

20

100

1,700

2023 2

- 
- 
- 
- 
- 

compliance@powerchina-intl.com  
+8610-58382629



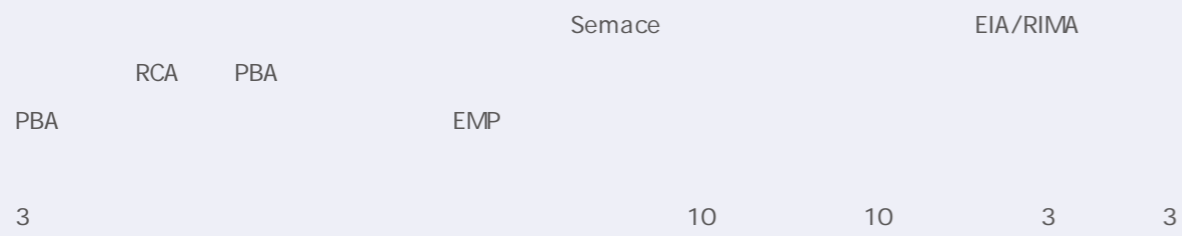
# 02

## 环境

- 环境合规
- 应对气候变化
- 废弃物管理
- 水资源循环利用
- 生物多样性保护

16

7



10

10

3

3



1,595



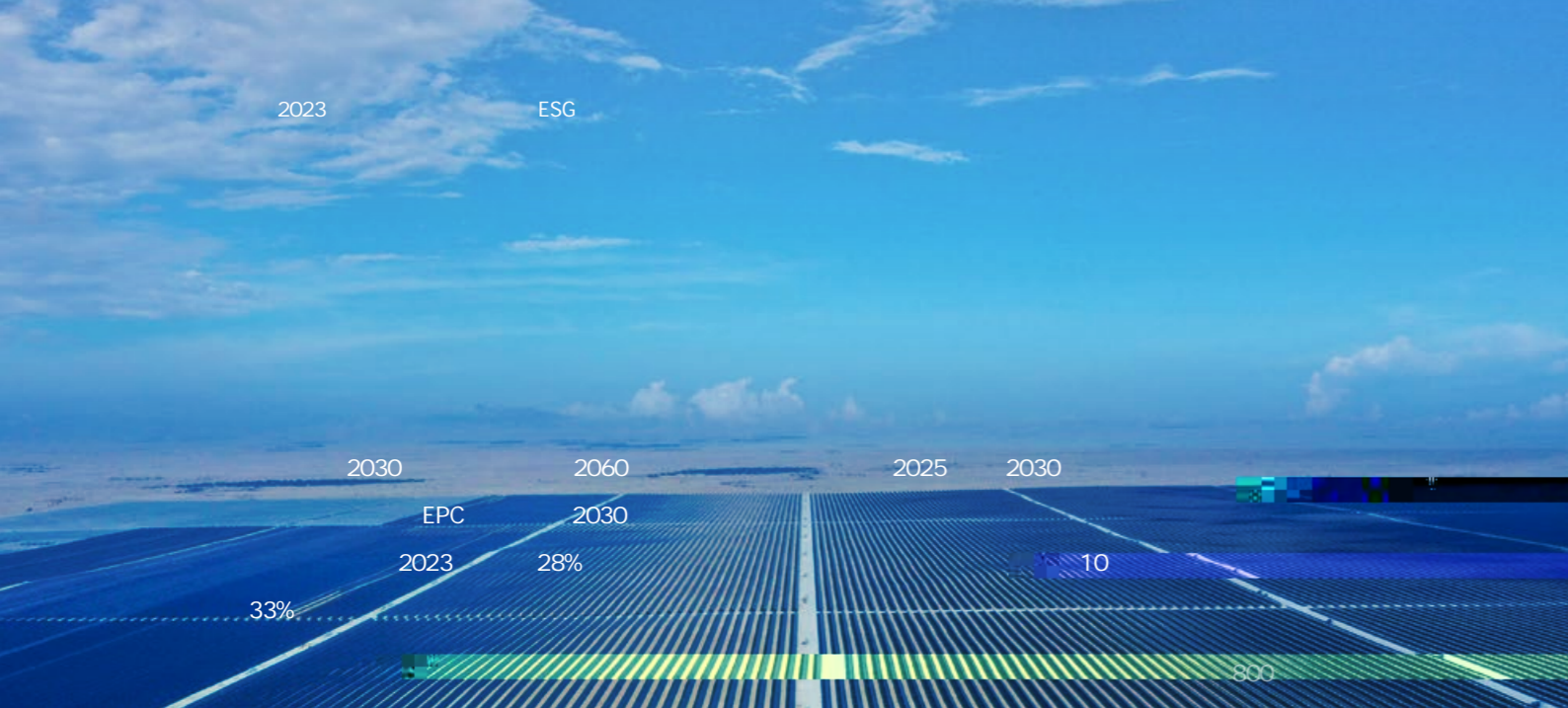
2023



0.35

0.52%

	[ ]	[ ]	[%]	[%]	[%]
	0.93	6.42	0.54	0.08	0.62
	0.26	1.86	0.42	0.06	0.48
	0.42	7.37	0.50	0.03	0.53
	0.54	3.40	0.38	0.06	0.44
	0.41	7.97	0.48	0.02	0.50
	0.79	4.81	0.46	0.08	0.53
	3.36	31.83	0.47	0.05	0.52



1	2	3
.	.	.
.	.	.
.	.	.
.	.	.
4	5	6
.	.	.
.	.	.
.	.	.
.	.	.
7	8	
.	.	
.	.	
.	.	
.	.	
9	10	
.	.	.
.	.	.
.	.	.
.	.	.

2023



1,999.67 /

93.13 /

2023

	[ ]	[ ]	[ / ]	[ / ]	[ / ]
	58,403	2,486	49.51	2.11	51.62
	210,748	457	473.28	1.03	474.31
	41,817	2,125	28.50	1.45	29.95
	200,347	6,181	223.24	6.89	230.13
	31,434	4,566	18.78	2.73	29.95
	57,369	9,785	54.35	9.27	63.61
	600,118	25,600	89.32	3.81	93.13

2023

	[ ]	[ ]	[ / ]
	299,922,651	5,933,333	933.51
	1,205,231,674	5,812,051	9,790.84
	210,148,203	3,376,847	523.88
	1,451,595,232	25,955,187	5,926.96
	225,176,146	9,288,953	504.35
	235,165,391	54,442,553	987.64
	3,627,239,297	104,808,924	1,999.67



2023 12

20



50.4<sup>GW</sup>

18.7<sup>GW</sup>

31.7<sup>GW</sup>



800

80

10

10%



18

30

90



Drâa-Taf lalet  
Ouarzazate

Noor  
150MW

7,400  
248

178



5

100

23



Adama

Adama  
20%

Nazret

204MW



Adama



5

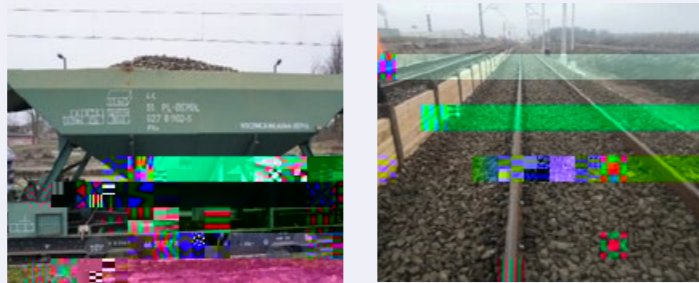
14

35



E75

- 
- 

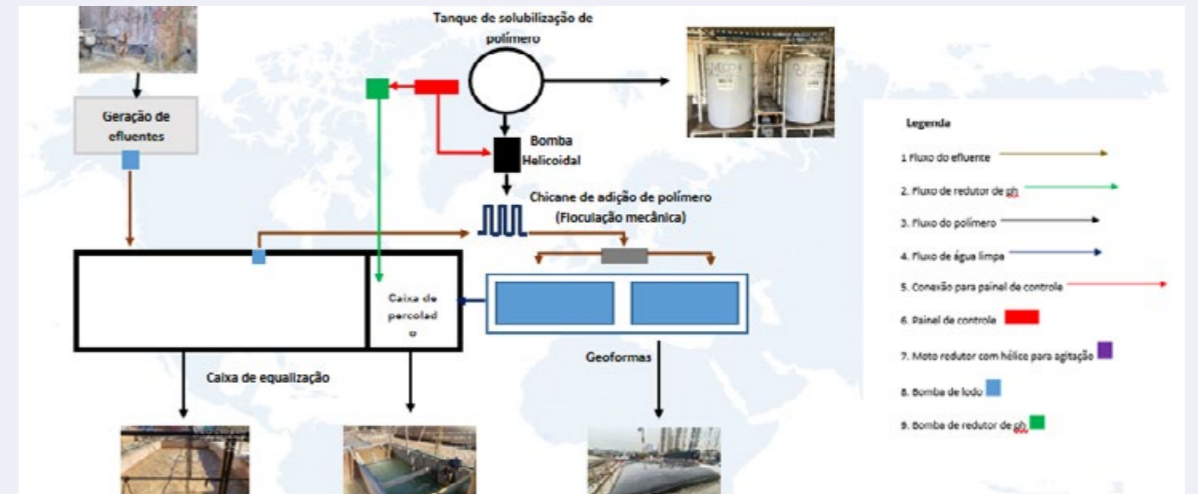


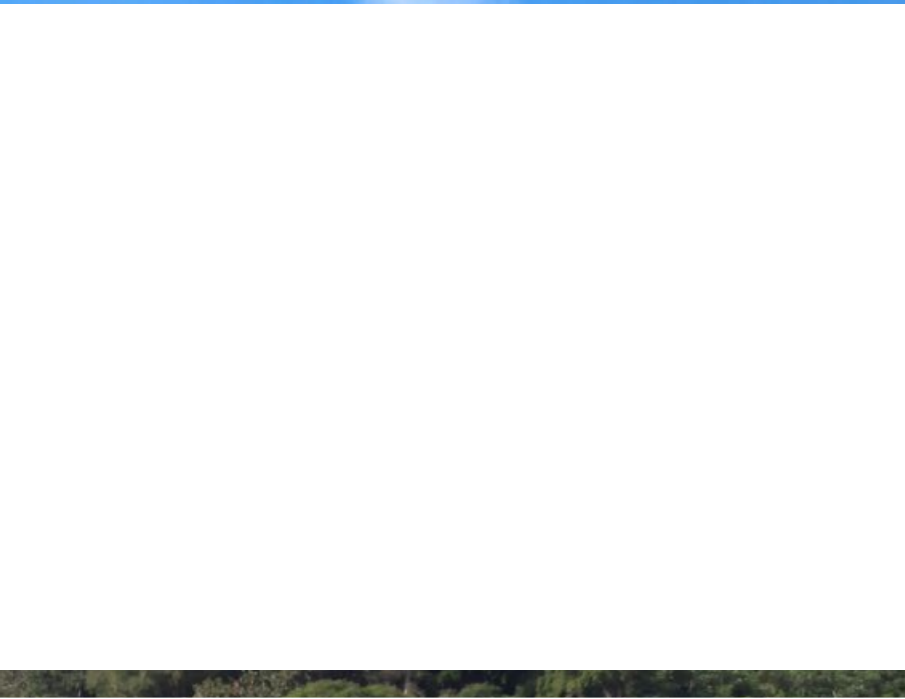
E75



2

PH





E75

E75

“ ”

“ ”

“ ” “ ” “ ”



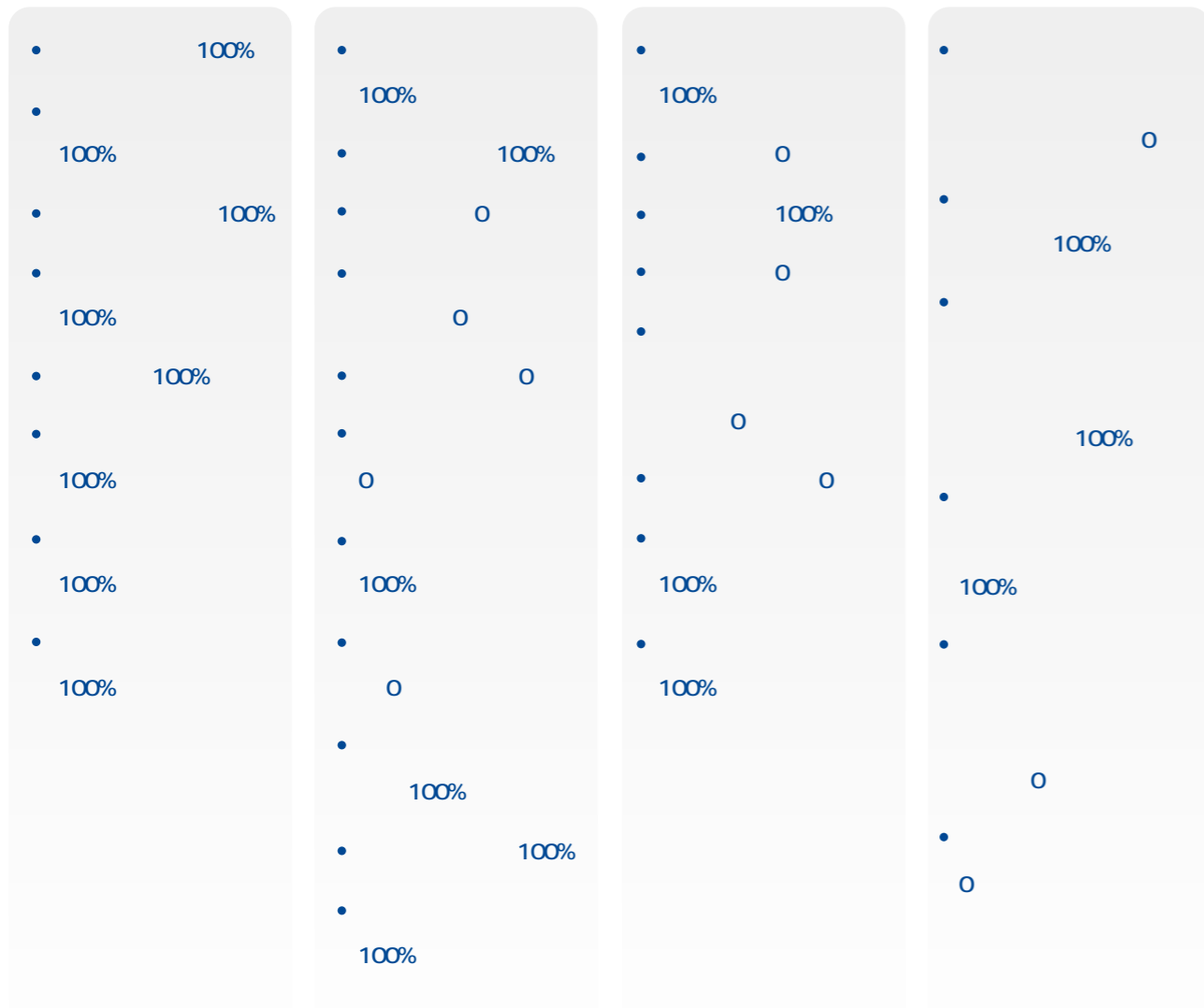


# 03

## 社会

- 社会责任方针与目标
- 员工
- 社区关系
- 质量与职业健康安全
- 负责任采购

" "



| | | | | | | | | | |

2023	794	4.41%	576
4.51%	218	4.13%	80,015
8.80%	75,901	8.81%	4,114
8.65%		P89	

2023	1,100	91%	1,200
85.02%	40%	90%	

2023		
	[ ]	[ ]
	13,609	16,002
	8,325	9,735
	8,629	11,000
	12,235	14,458
	15,350	18,306
	9,882	10,514
	68,030	80,015
		85.02%

/

/

ILO

" "



<p><b>SITE</b> www.contatoseguro.com.br/cd2v</p> <p>Disponível para o público interno e externo</p>	<p><b>APLICATIVO – APP</b></p> <p>Disponível para o público interno e externo</p>
<p><b>CANAL TELEFÔNICO</b> 0800 800 1207</p> <p>Disponível para o público interno e externo</p>	<p><b>RELATOS PRESENCIAIS</b></p> <p>Para um Agente de Compliance, Compliance Officer, ou para membro do Comitê de Compliance.</p>

2

APP

QMSR

2023  
EPC  
Online  
800

2,500



236 66

" "



6 332



60 100%  
60 2  
120 1 200



2017

POWERCHINA OVERSEAS VOLUNTEER ASSOCIATION " POVA"

POVA

Tech 4 Life

Green 4 Future

Love 4 World

POVA

2023

21

45

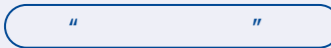
100

928

1.47



" " Technology 4 Life



2023 10

Inigan



Inigan

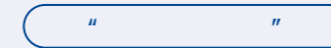
" " Green 4 Future



2023 3 24



" " Love 4 World



2023



2023

2023

128,650.20

2023

	2023	[ ]
	17,493.23	
	50,373.48	
	2,388.03	
	22,879.59	
	20,909.39	
	14,606.49	
	128,650.20	



Nyumbani



4,236

1,855

12



2024



4,236

1,855

840



“

— Sarah

”





“ ”



### Love Lights Angola

Cuvelai



### Love Lights Nigeria

48

Bunkure lauteye



### Love Lights Mauritania

2023

720



SDGs



500

155 2023

141

UNGC

500



679

679

13% 43





34

5

5,314



20



497

6,999.91



20

2023

6

17

115

100%



41

13

18

HSE

333



2023

286

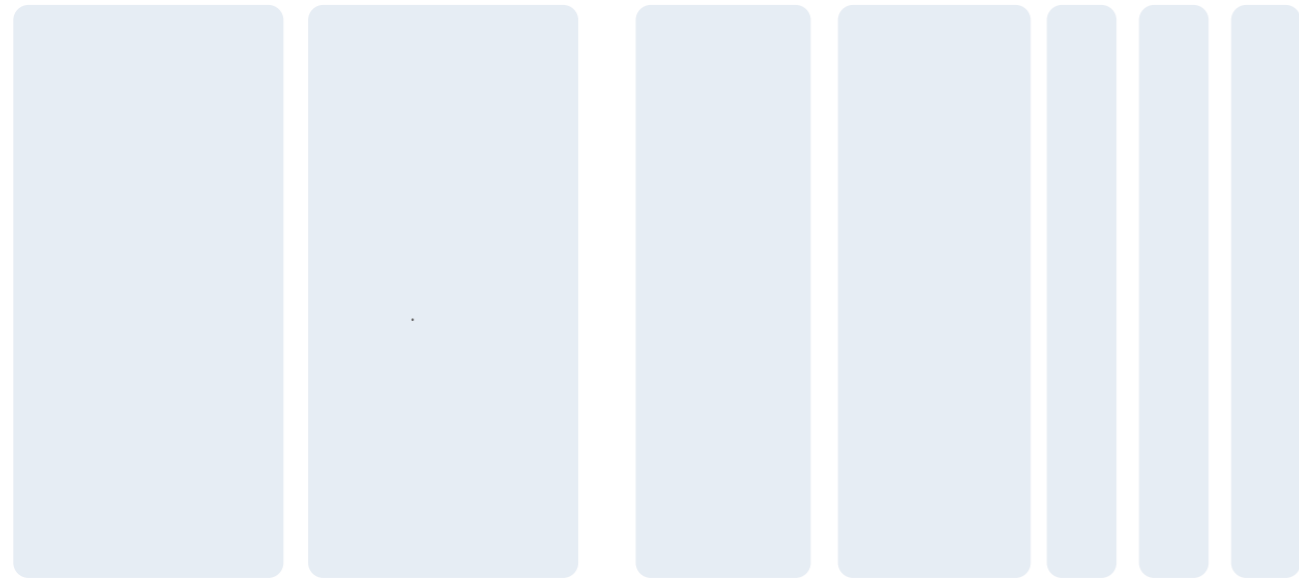
100%

2023

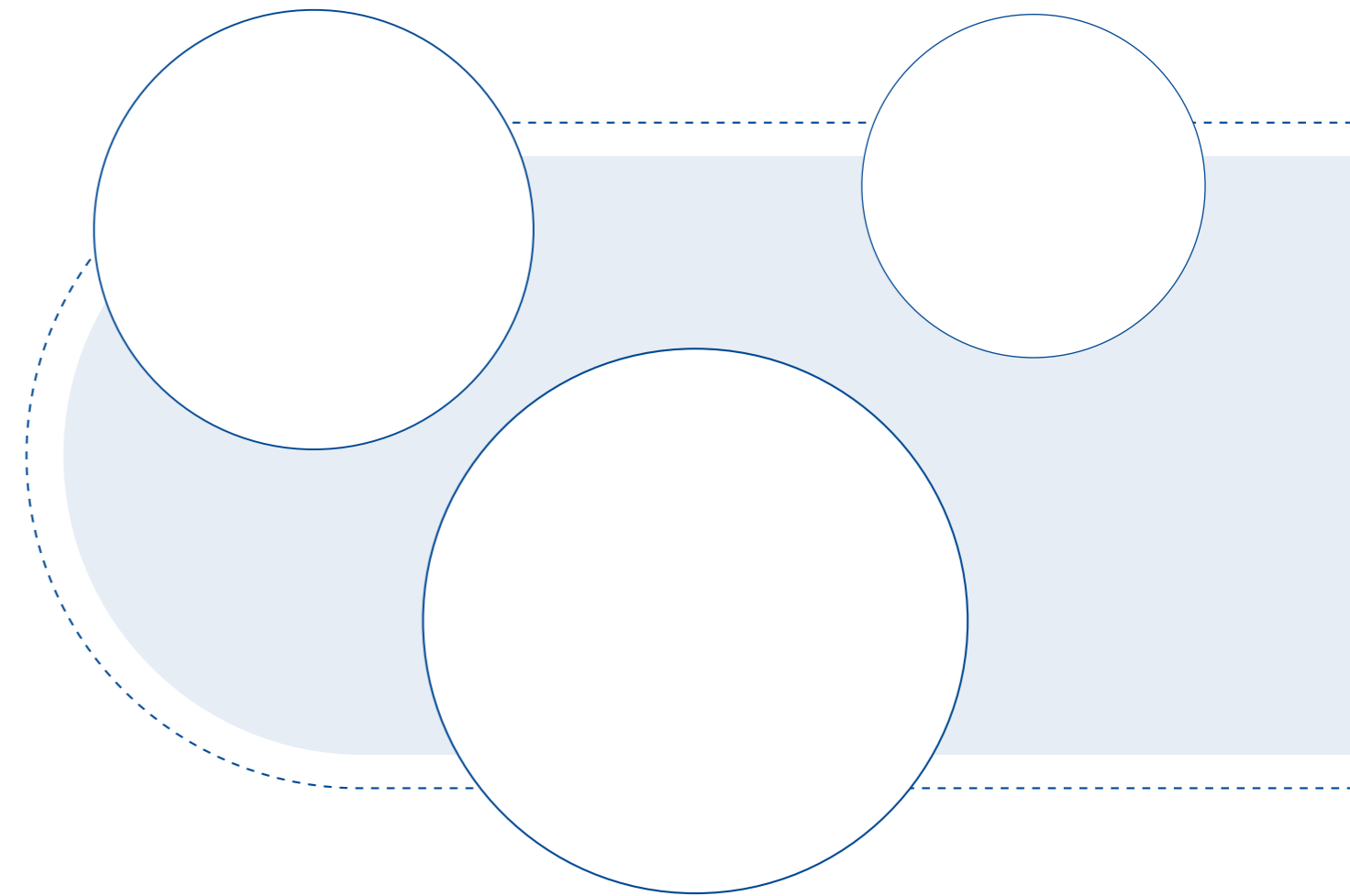


2023  
" — — "

1



1





2023 6 1 30

" "

5 29

" "

6 16

"

"

"

"

"



" "

321

7,594

" "

" "

601

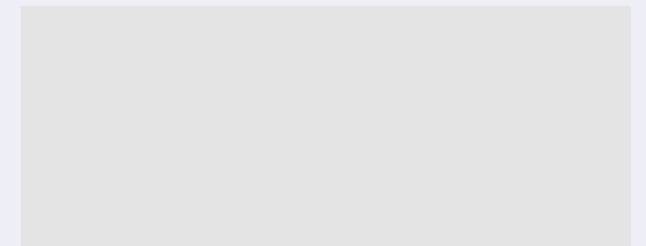
18,895

QHSE

QHSE



6 30





2023 4 25 5 1 , " "

333 401 211

415 7,365 186 922 18,637

2023

	29	11	30	81	102	148
	7	6	25	34	54	85
	4	12	149	70	80	100
	243	97	604	1,226	2,591	2,604
	46	4	17	45	27	47
	29	28	88	216	343	218
	213	654	1,938	5,107	6,410	4,315



2023

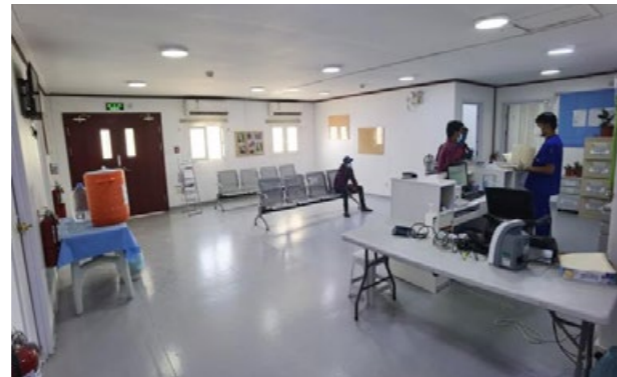


207  
333  
50  
121

60  
41



121



7



2

Inner Power

60

4

Inner Power

2023

0.82

1.2%

	[ ]	[ ]	[%]
	11.80	0.13	1.08
	4.45	0.05	1.03
	14.67	0.29	2.01
	8.97	0.14	1.52
	16.74	0.10	0.59
	10.56	0.12	1.13
	67.19	0.82	1.22



" " "

24



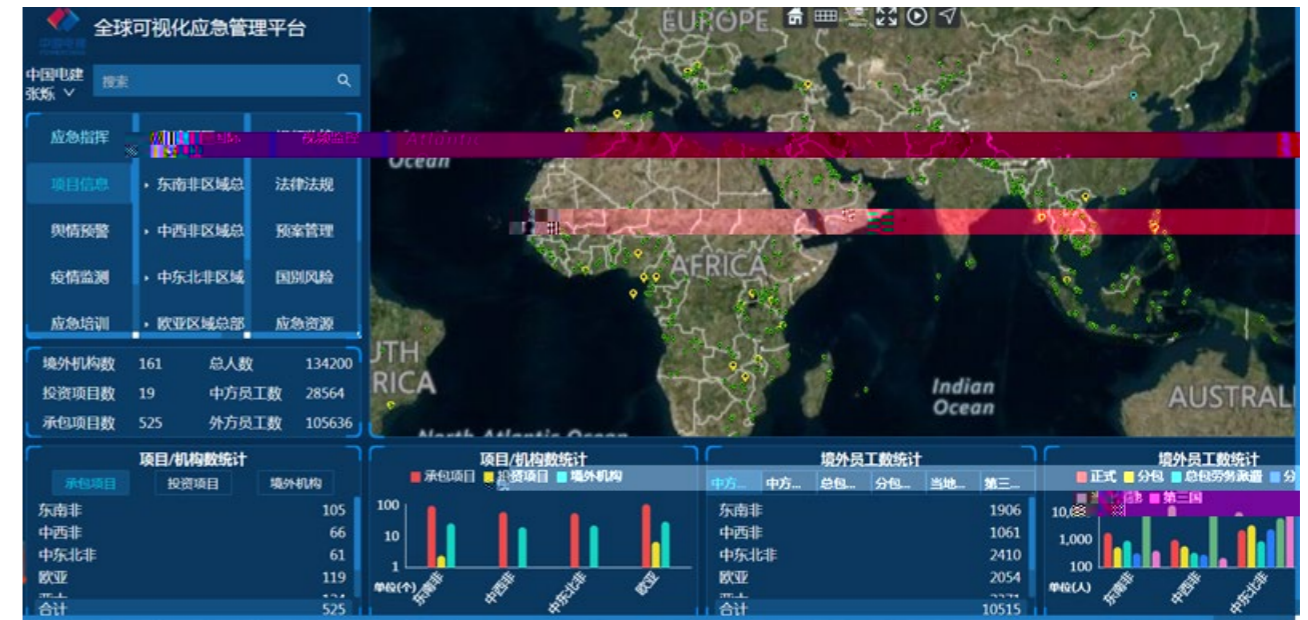
2023

13

8

13 171

171



86

" "

" "

794 2023

" "

50

700



2023

A 37 B 112



[Empty text box]



[Empty text box]



[Empty text box]



[Empty text box]



2023

66.97%

2023

	[ ]	[ ]	[ ]	[%]
	1.64	1.97	3.61	45.41%
	1.09	0.36	1.45	75.09%
	2.13	1.58	3.71	57.39%
	3.39	0.78	4.17	81.23%
	2.26	0.62	2.88	78.48%
	1.89	0.79	2.68	70.35%
	12.39	6.11	18.50	66.97%

AEO Authorized Economic Operator

AEO

AEO

6



:

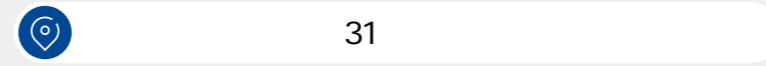


5

7

44

6



14

3



<ul style="list-style-type: none"><li></li><li></li></ul>	<ul style="list-style-type: none"><li></li><li></li><li></li><li></li><li></li><li></li><li></li></ul>	<ul style="list-style-type: none"><li></li><li></li><li></li><li></li></ul>
<ul style="list-style-type: none"><li></li><li></li></ul>	<ul style="list-style-type: none"><li></li><li></li><li></li><li></li><li></li><li></li><li></li><li></li><li></li></ul>	<ul style="list-style-type: none"><li></li><li></li><li></li><li></li><li></li><li></li><li></li></ul>

	<ul style="list-style-type: none"><li></li><li></li><li></li><li></li><li></li></ul>	<ul style="list-style-type: none"><li></li><li></li><li></li><li></li><li></li></ul>
	<ul style="list-style-type: none"><li></li><li></li><li></li><li></li><li></li><li></li><li></li><li></li><li></li></ul>	<ul style="list-style-type: none"><li></li><li></li><li></li><li></li><li></li><li></li><li></li><li></li><li></li></ul>
	<ul style="list-style-type: none"><li></li><li></li><li></li><li></li><li></li><li></li><li></li><li></li><li></li></ul>	<ul style="list-style-type: none"><li></li><li></li><li></li><li></li><li></li><li></li><li></li><li></li><li></li></ul>

1.	S				
2.	(S)				
3.	(G)				
4.	(S)				
<p>\$ Z &lt;Úp±DŸG;bfZ ,2™ß&amp;.rjý ² , "bæ7bÔ RI ës^ -/-1" ±E³R† f bp Pæ'Ó(•"3 p ŸG bfZ ,2P 6</p>					



	2023 [ ]
	17,493.23
	50,373.48
	2,38


50 38 . ,





50



	50	324	10	334	21	1	22	6.48%	10.00%	6.59%
		<b>11,927</b>	<b>234</b>	<b>12,161</b>	<b>2,512</b>	<b>23</b>	<b>2,535</b>	<b>21.06%</b>	<b>9.83%</b>	<b>20.85%</b>
30		4,875	99	4,974	1,267	9	1,276	25.99%	9.09%	25.65%
30	50	6,296	117	6,413	1,126	11	1,137	17.88%	9.40%	17.73%
	50	756	18	774	119	3	122	15.74%	16.67%	15.76%
		<b>74</b>	<b>0</b>	<b>74</b>	<b>1</b>	<b>0</b>	<b>1</b>	<b>1.35%</b>	<b>/</b>	<b>1.35%</b>
30		28	0	28	0	0	0	0.00%	/	0.00%
30	50	46	0	46	1	0	1	2.17%	/	2.17%
	50	0	0	0	0	0	0	/	/	/
		<b>14,100</b>	<b>358</b>	<b>14,458</b>	<b>2,637</b>	<b>30</b>	<b>2,667</b>	<b>18.70%</b>	<b>8.38%</b>	<b>18.45%</b>
		<b>2,833</b>	<b>123</b>	<b>2,956</b>	<b>340</b>	<b>28</b>	<b>368</b>	<b>12.00%</b>	<b>22.76%</b>	<b>12.45%</b>
30		923	69	992	147	15	162	15.93%	21.74%	16.33%
30	50	1,485	50	1,535	138	8	146	9.29%	16.00%	9.51%
	50	425	4	429	55	4	59	12.94%	100.00%	13.75%
		<b>11,119</b>	<b>668</b>	<b>11,787</b>	<b>1,042</b>	<b>124</b>	<b>1,166</b>	<b>9.37%</b>	<b>18.56%</b>	<b>9.89%</b>
30		5,598	430	6,028	591	73	664	10.56%	16.98%	11.02%
30	50	4,475	203	4,678	401	49	450	8.96%	24.14%	9.62%
	50	1,046	35	1,081	50	2	52	4.78%	5.71%	4.81%
		<b>3,267</b>	<b>296</b>	<b>3,563</b>	<b>230</b>	<b>17</b>	<b>247</b>	<b>7.04%</b>	<b>5.74%</b>	<b>6.93%</b>
30		861	37	898	90	8	98	10.45%	21.62%	10.91%
30	50	2,334	254	2,588	124	7	131	5.31%	2.76%	5.06%
	50	72	5	77	16	2	18	22.22%	40.00%	23.38%
		<b>17,219</b>	<b>1,087</b>	<b>18,306</b>	<b>1,612</b>	<b>169</b>	<b>1,781</b>	<b>9.36%</b>	<b>15.55%</b>	<b>9.73%</b>

		<b>590</b>	<b>42</b>	<b>632</b>	<b>19</b>	<b>1</b>	<b>20</b>	<b>3.22%</b>	<b>2.38%</b>	<b>3.16%</b>
30		172	33	205	3	1	4	1.74%	3.03%	1.95%
30	50	363	9	372	10	0	10	2.75%	0.00%	2.69%
	50	55	0	55	6	0	6	10.91%	/	10.91%
		<b>8,604</b>	<b>1,175</b>	<b>9,779</b>	<b>432</b>	<b>66</b>	<b>498</b>	<b>5.02%</b>	<b>5.62%</b>	<b>5.09%</b>
30		3,801	613	4,414	152	25	177	4.00%	4.08%	4.01%
30	50	4,479	494	4,973	267	40	307	5.96%	8.10%	6.17%
	50	324	68	392	13	1	14	4.01%	1.47%	3.57%
		<b>69</b>	<b>34</b>	<b>103</b>	<b>14</b>	<b>0</b>	<b>14</b>	<b>20.29%</b>	<b>0.00%</b>	<b>13.59%</b>
30		20	7	27	4	0	4	20.00%	0.00%	14.81%
30	50	48	27	75	10	0	10	20.83%	0.00%	13.33%
	50	1	0	1	0	0	0	0.00%	/	0.00%
		<b>9,263</b>	<b>1,251</b>	<b>10,514</b>	<b>465</b>	<b>67</b>	<b>532</b>	<b>5.02%</b>	<b>5.36%</b>	<b>5.06%</b>
		<b>75,901</b>	<b>4,114</b>	<b>80,015</b>	<b>6,685</b>	<b>356</b>	<b>7,041</b>	<b>8.81%</b>	<b>8.65%</b>	<b>8.80%</b>

		GRI	SDGs
		2-2 2-3 2-18	
		2-22	
<b>公司介绍</b>  <b>我们的战略</b>  <b>2024 年目标</b>  <b>我们的业务</b>  <b>关键绩效</b>  <b>奖项与荣誉</b>	2-1 2-2		
	2-22		
	2-1 203-1		
	2-29 201-1 201-2 403-9 403-10		
		2-16 2-29	
		3-1 3-2 3-3	
		2-9 2-11 2-12 2-16 405-1	
		2-13 2-14	
		2-26 2-27 205-2 205-3	
		201-2	    
		2-23 2-24 203-1 302-1 302-2 302-3 305-1 305-2 305-4	
		2-23 306-2	
		2-23	
		2-23 101-1 101-2 304-2	

		GRI	SDGs
		2-23 2-24	   
		2-7 2-8 2-23 203-1 402-2 404-2	
		203-1 413-1	
		203-1 403-1 403-2 403-3 403-4 403-5 403-6 403-7 403-8	
		204-1 308-1 308-2 413-1 414-1	
		2-1	
		2-16 2-29	
		3-1 3-2 3-3	
		201-2 204-1 302-1 302-2 302-3 305-1 305-2 305-4 401-1 403-9 403-10 405-1	
		2-5	

2023

ESG



# ESG

3.

•

•

•

•

4.

1.

2.

2023

"

"

ESG

"

ESG

"

"

"

1.

ESG

2023

1

1

2023

12

31

2.

ESG

ESG

3.

ESG

AA1000AP 2018  
SDGs

ESG

ESG

AA1000 v3

AA1000AP 2018

AA1000AS v3

AA1000AS v3

AA1000AS v3

AccountAbility

"

"

ESG

ESG

SDGs /

ESG /

GRI /

TCFD /

ISSB /

1 ---

2 ---

/

CSRD /

GHG Protocol

2023

ESG

SDGs

AA1000AP 2018

1.

2.

2024 8 28

