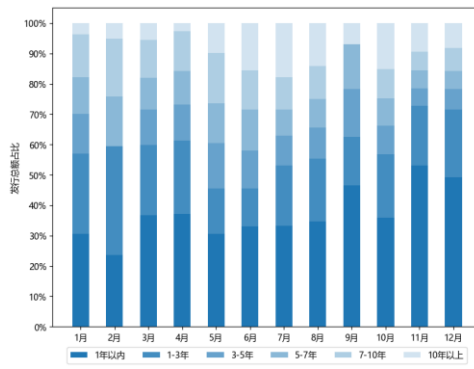


						12	6759.8
	19.49%	36.99%		241.86			23.86%
31.0%		211.24		75.33%		77.07%	23
				9147.89			
10		88.28%					
						10	34.54BP
1.68%	10		37.75BP	1.73%	1	10	5.99BP
59.09BP	1	10		2.41BP	52.45BP		5.55%
						12	3000
	14000		4030				Shibor
4.0BP	DR001		24.63BP				
						12	105.7725
108.4816			7.1877	7.1884		7.2332	7.2988 10
	4.18%	4.58%	10			1.044%	1.082% 10
	2.15%	2.43%	10			4.248%	4.566%
						23	
			2				
							1.0
							2024
						12	31 10
	88.49BP	1.6752%		5		2025	

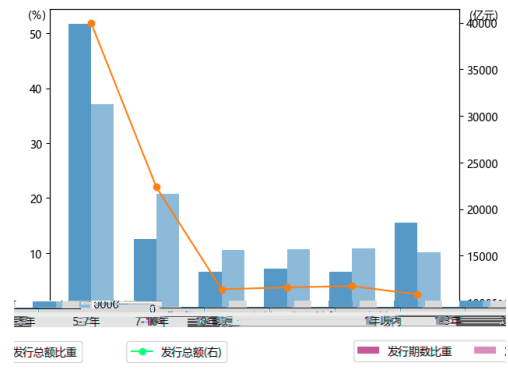


2024	12		157		19272.6		
14		6759.8		130	10918.7	%	□
		241.86					

3 1~12



4 1~12



12

241.86

23.86%

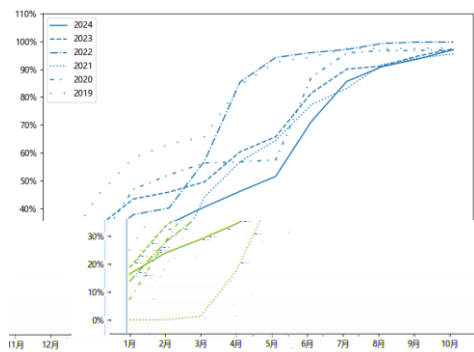
31.0%

211.24

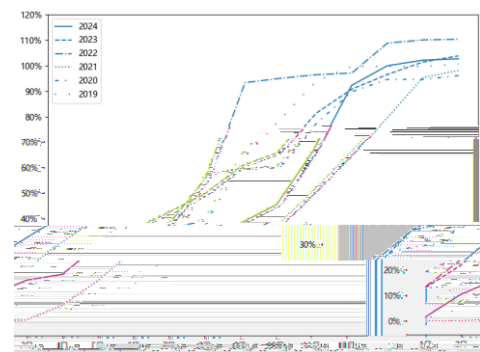
75.33%

77.07%

5



6



12 31 2024

47018.48

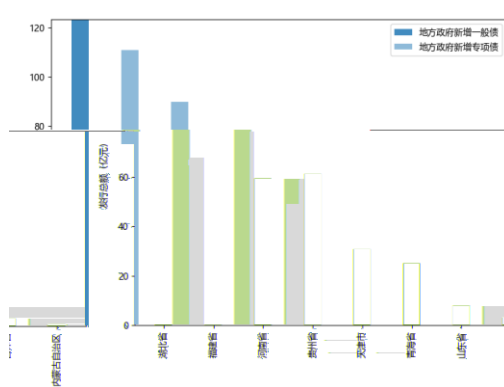
6986.16

7200 97.03%

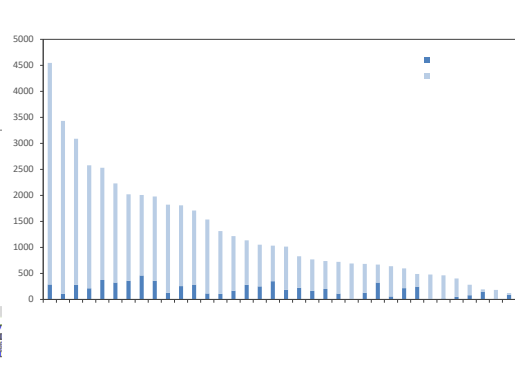
40032.32

39000 102.65%

7 12



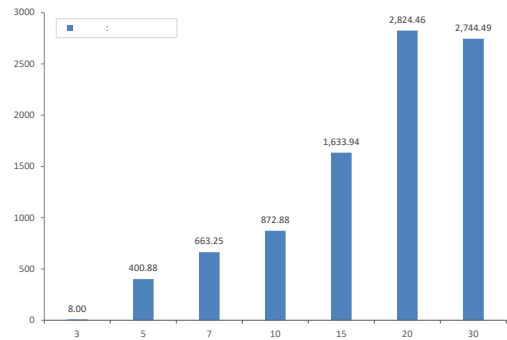
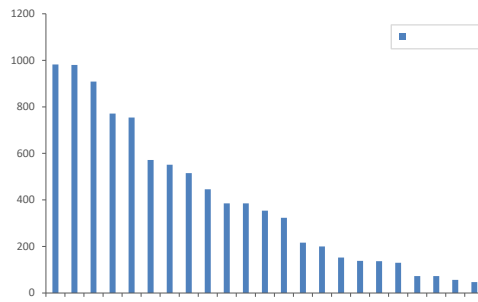
8 1~12



12 123.28
 4546.25
 4259 287.25
 12 23 9147.89
 982 980 908.83
 20 2824.46 10
 88.28%

9 12

10 12



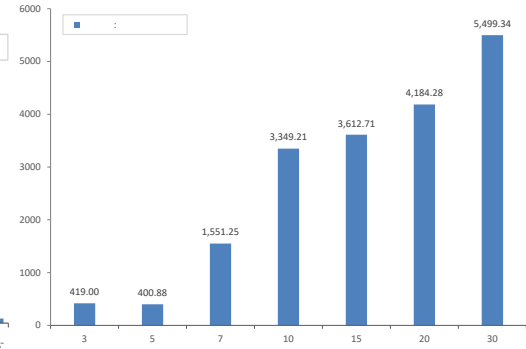
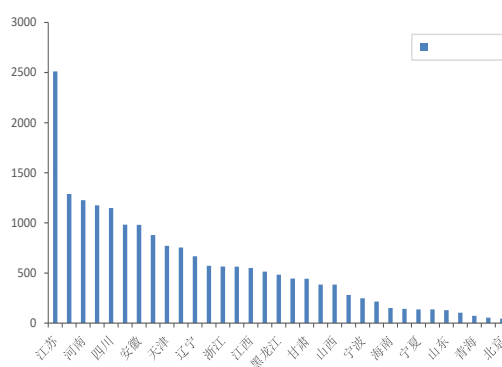
Wind

Wind

33
 19016.68 2
 2511 1288 1227 1176
 1148 30
 5499.34 10 87.53%

11 11-12

12 11-12

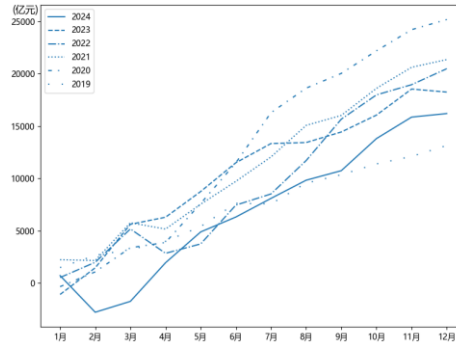


Wind

Wind

	12		1600.1		70.7%
218.62%					
	12	31	2024	56489.2	1.28%
	40304.2		3.38%	16185.0	11.23%

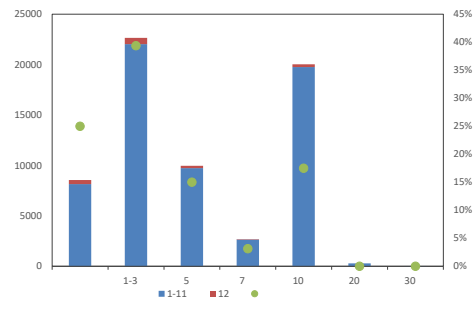
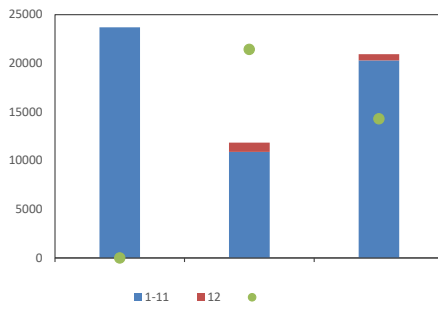
13



	12		960
60%		23700	41.95%
	1-3	630.00	39%
	1-3	22663.3	35%

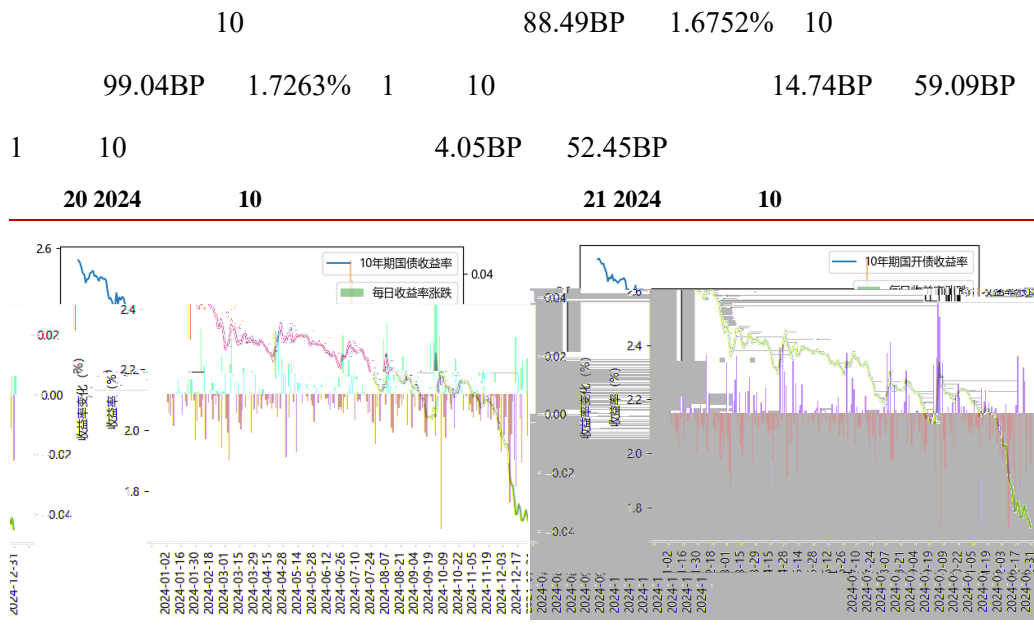
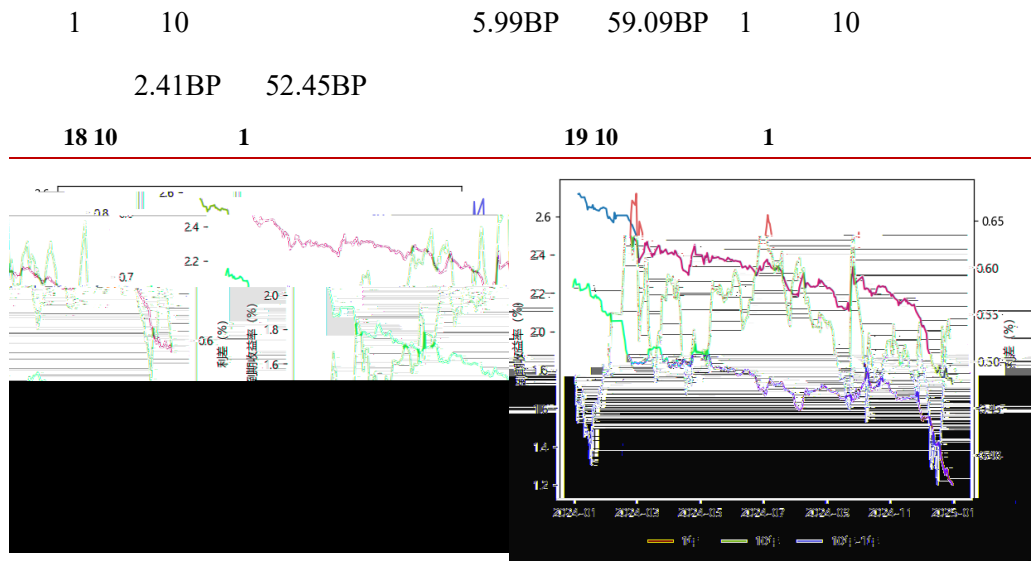
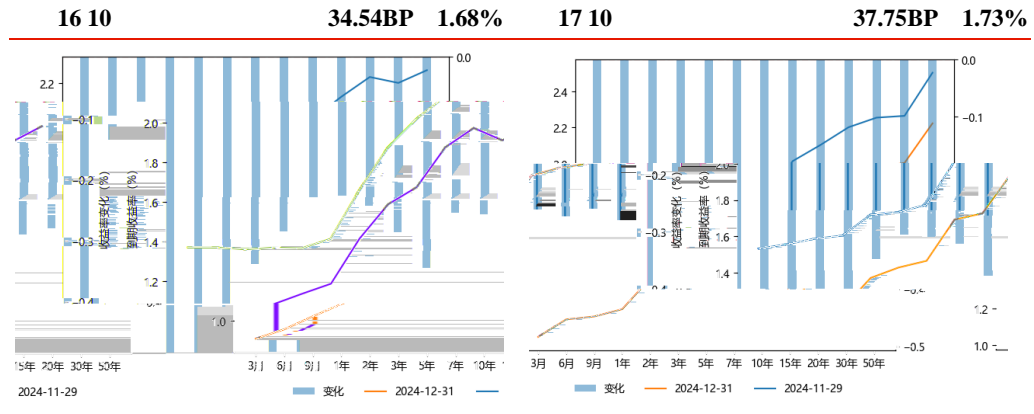
14

15



2024	12	10
37.75BP	1.73%	

34.54BP	1.68%	10
---------	-------	----

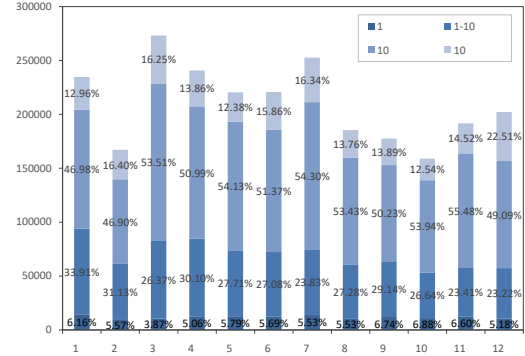
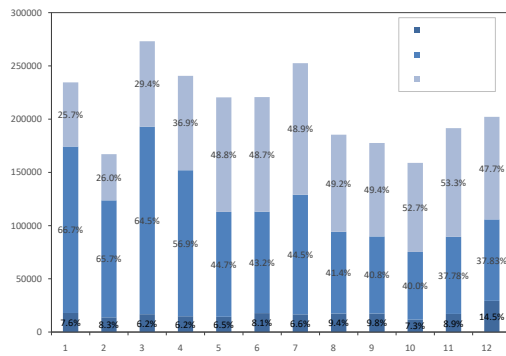


12	2			8000		
2000					10	
	2%	1.981%				
10			1.9539%			
12	9					
						2011
				10	1.9168%	
1.7771%						
14						
1.7771%		1.7215%	18			
	10			1.7564%	19	25BP
		1.7018%				
12	23	24				2025
				10		1.7365%
1.6752%						
12			5.55%			
5.68%		37.83%				71.54%
14.5%			5.59%			47.7%
1			17.06%	5.18%	1-10	
	4.69%		23.22%	10		6.61%

49.09% 10
22 1~12

63.63%
23 1~12

22.51%



1.13

1844

MLF

16783

3000

14000

3

7000

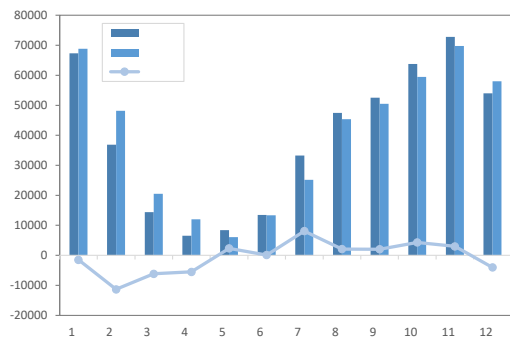
12

4030

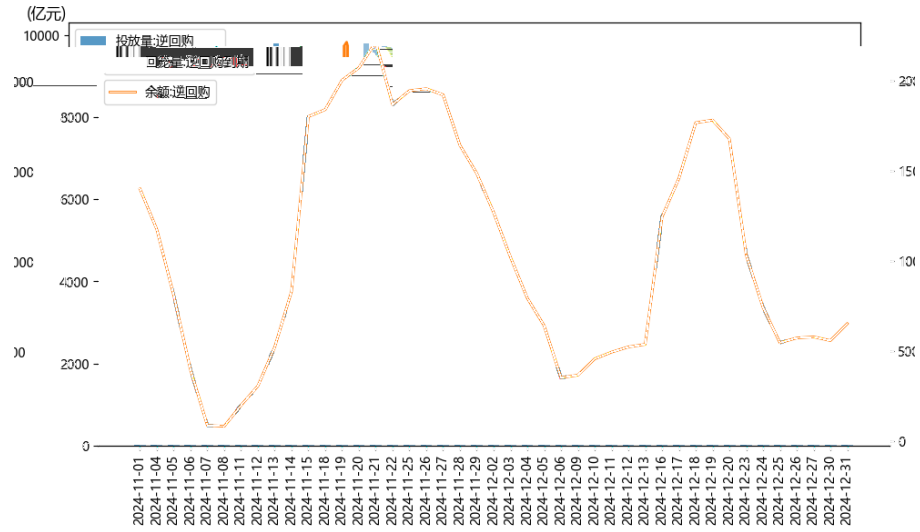
24 12

25 1~12

操作类型	公开市场操作	金额 (亿元)
投放	质押式逆回购	33978
	买断式逆回购	14000
	MLF投放	3000
	国债买卖	3000
	国库现金定存发行	0
	合计	53978
回笼	逆回购到期	42308
	MLF回笼	14500
	国库现金定存到期	1200
	合计	58008
净投放	合计	-4030

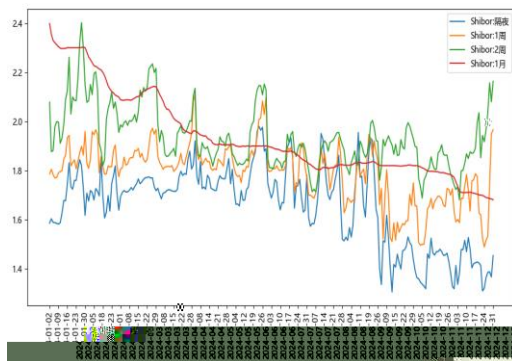


26 11-12

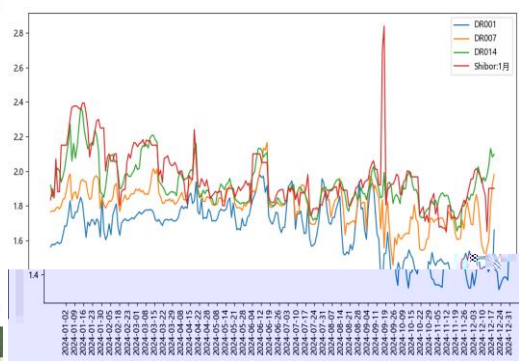


12	31	Shibor	4.0BP	13.2BP	1.454%		
7	Shibor	37.5BP	18.0BP	1.966%	14	Shibor	
		44.0BP	8.5BP	2.163%	1	Shibor	
7.3BP		71.7BP	1.681%	12	31	DR001	24.63BP
		9.7BP	1.6582%	DR007		37.58BP	
21.72BP	1.9812%	DR014		44.49BP		17.82BP	
2.0969%	DR1M	17.86BP		6.67BP	1.9%		

27 1~12 Shibor

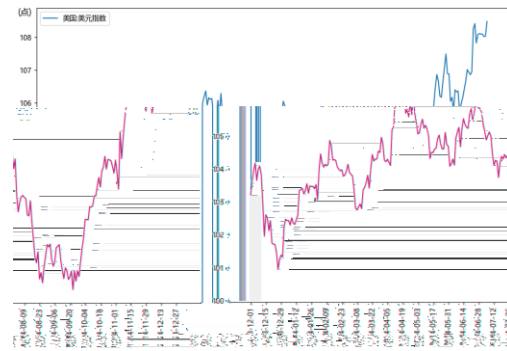


28 1~12

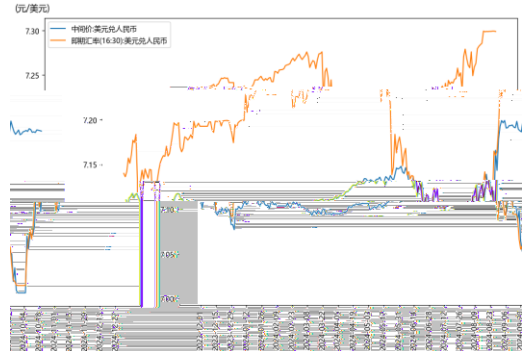


12	105.7725	108.4816	7.1877
7.1884	7.2332	7.2988	

29



30

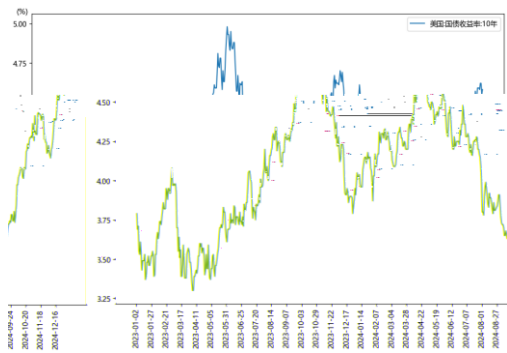


10 4.18%

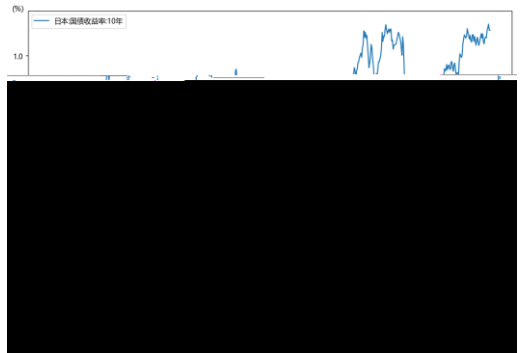
4.58% 10 1.044% 1.082% 10

2.15% 2.43% 10 4.248% 4.566%

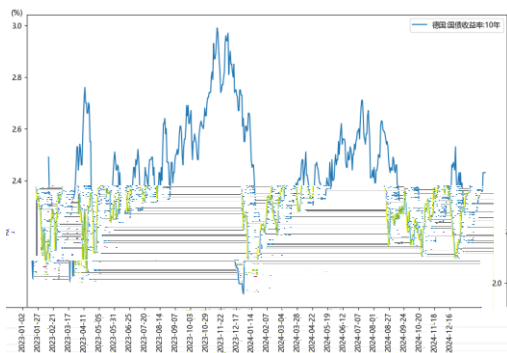
31 10



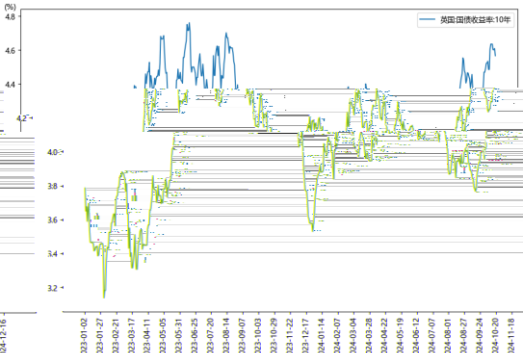
32 10



33 10



34 10



		10				87.53%			
			10			34.54BP	1.68%		
1.0									
	2024								
				12	31	10			88.49BP
1.6752%			5				3		
							3	7	
	7	9							
				9	11				
					11				

