





DIP CHS-DRGs

DRGs **DRG**

DRG **DRG**

DRGs **2018**

DRG **2019** **30** **DRG** **CHS-DRGs**

DRG CHS-DRG **DRGs** **CHS-DRGs**

DIP CHS-DRGs **2020** **10** **19** **Big Data**

Diagnosis-Intervention Packet **DIP** **DIP**

CHS-DRG **DIP** **CHS-DRGs**

CHS-DRGs DIP **CHS-DRGs**

DIP **CHS-DRGs**

DIP **DIP** **DIP**

DIP **DIP** **10,000**

DRGs **2018** **DIP**

3-4 **2021** **3** **CHS-DRGs** **1-2**

DIP **CHS-DRGs**

| 1 | CHS-DRGs | | DIP | |
|------|----------|---------|---------|--|
| | CHS-DRGs | | DIP | |
| 2018 | 12 | | | |
| 2019 | 10 | DRG | | |
| | | | 2020 10 | |
| 2020 | 6 | CHS-DRG | | |
| | 1.0 | | | |
| | | | 1-2 | |
| | 1-2 | | | |

2

DIP

1.

2.

1.

2.

DIP
CHS-DRGs

1.

2.

3.



DRGs

20 70
1983 DRGs Medicare 按 DRGs DRGs
100% DRGs
40%

3 DRGs

| | DRGs | DRG | % | DRGs | DRG | % | | |
|---|---------|------|-----|--------|---------|------|-----|------|
| | MS-DRGs | 1983 | 543 | 100% | NordDRG | 1999 | 532 | 100% |
| | HBC | 1993 | 786 | 100% | DkDRG | 2000 | 599 | 100% |
| | DRG | 1995 | 506 | 100% | NordDRG | 2000 | 914 | 36% |
| 按 | AR-DRG | 1997 | 657 | 100% | G-DRG | 2003 | 914 | 100% |
| 安 | LDF | 1997 | 853 | 100% | HBG | 2003 | 600 | 100% |
| | DRG | 1997 | - | - | PMSI | 2004 | 768 | 100% |
| | NordDRG | 1997 | 696 | 80-90% | DBC | 2005 | 641 | 100% |

DIP

DRGs

DRGs

CHS-DRG

DIP

/

/

/

DRGs DIP

/

DRGs

DRGs

1. ICL

ICL

DRGs

2. IVD

Q1

IVD

IVD

900

15%

2019

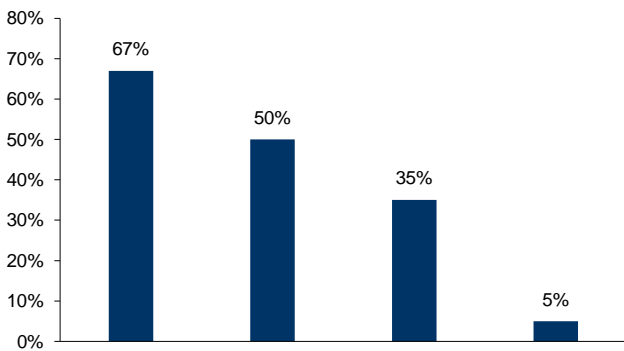
55%

DRG

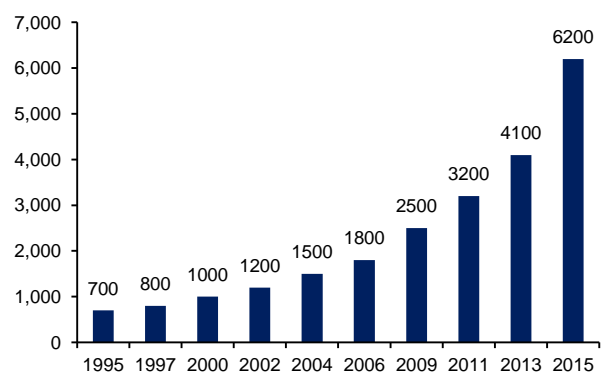
IVD
DRGs

70% 40%
IVD

3 ICL



4



: McEvoy & Farmer Immunochemistry Testing Markets in China

3. /

>

me-too

me-better

big pharma

Biotech

fast follow

4.

DRGs

FSH)

FSH

LH

2016

2017

2

4

9

HPV

13

-Hib

4

| | | | | | |
|------|---|---|---|---|---|
| | ✓ | ✓ | ✓ | ✓ | ✓ |
| | | | | | ✓ |
| SGA | | ✓ | ✓ | ✓ | ✓ |
| | | ✓ | | ✓ | ✓ |
| | | ✓ | ✓ | ✓ | ✓ |
| SHOX | | ✓ | ✓ | ✓ | ✓ |
| | ✓ | ✓ | | | |
| | ✓ | ✓ | | | |
| | | | | | ✓ |
| | | | | ✓ | |

: FDA PMDA

5

| | | | | | |
|------|----------|----|------|----|------|
| 9 | HPV | 1 | 1298 | 16 | 2018 |
| 4 | HPV | 1 | 798 | 30 | 2017 |
| 13 | | 1 | 698 | 27 | 2017 |
| | -IPV-Hib | 1 | 599 | 12 | 2011 |
| 2 | HPV | 1 | 580 | 12 | 2017 |
| | | 1 | 280 | 2 | 2018 |
| | -Hib | 1 | 275 | 14 | 2010 |
| | AC-Hib | 1 | 210 | 14 | 2014 |
| 23 | | 3 | 190 | 13 | 2007 |
| EV71 | | 3 | 178 | 59 | 2016 |
| | | 1 | 172 | 9 | 2007 |
| | | 4 | 145 | 30 | 2007 |
| 4 | | 1 | 128 | 7 | 2018 |
| | AC | 3 | 100 | 5 | 2007 |
| | Hib | 6 | 85 | 9 | 2007 |
| | ACYW135 | 4 | 55 | 3 | 2008 |
| | | 11 | 55 | 30 | 2007 |
| 3 | | 7 | 50 | 6 | 2007 |

2017

5.

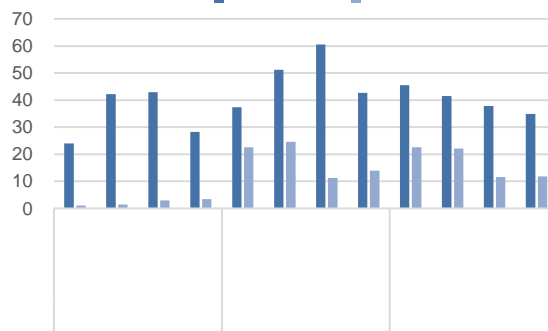
CMO

5



:

6



DRGs

DIP

DRGs

1.

2. DRGs-free

ICL

IVD

3.

EPS

PE

ROE

PEG

201020

19A

- 15 2020-10-18 -201014 2020-10-14
2020-10-11
- 2 -200930 2020-10-03
- 2020 10 DRGs 2020-10-01

| | | | |
|--|--|---|---------|
| | | | |
| | | 6 | 20% |
| | | 6 | 10%-20% |
| | | 6 | ±10% |
| | | 6 | 10% |
| | | 6 | 10% |
| | | 6 | ±10% |
| | | 6 | 10% |



.....

| | | | |
|--------|---------------|---|----|
| 518001 | 1012 | | 18 |
| | 0755-82130833 | | |
| 200135 | 1199 | 1 | 12 |
| 100032 | 6 | 9 | |

.....